

Bike For MIMA

Written by Bill Wagner
Wednesday, 07 July 2010 20:07

Day 8--49 miles

As I type this at Upper Whitefish Lake I am being swarmed with misquitos. this may be a short entry!!

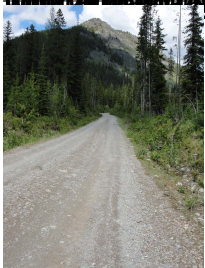
Today was great despite a major re-route I had to take since the road leading up to Whitefish Divide was being paved. Darn!! I had read the descent off of that was a blast! But Angels surfaced and I was well taken care of. As I was literally in the middle of the road being told by the Forest Service guy of the road closure another guy Tom or Tom I think, of iRide Adventures near Eureka, came riding up, as if, out of the vapors. He proceeded to escort me back to his business a little way down the road and give me a free Forest Service map and the directions of a way to get to this Lake where I'm now back on the route. Whew, that was a mouthful! I'm being taken care of everywhere I go it seems. The magic is truly the best part of these trips. Now where was I...



Bike For MIMA

Written by Bill Wagner

Wednesday, 07 July 2010 20:07



the world is pretty great scenery, get the major trail, lake at 4500 feet

the world is pretty great scenery, get the major trail, lake at 4500 feet

Bike For MIMA

Written by Bill Wagner

Wednesday, 07 July 2010 20:07

